

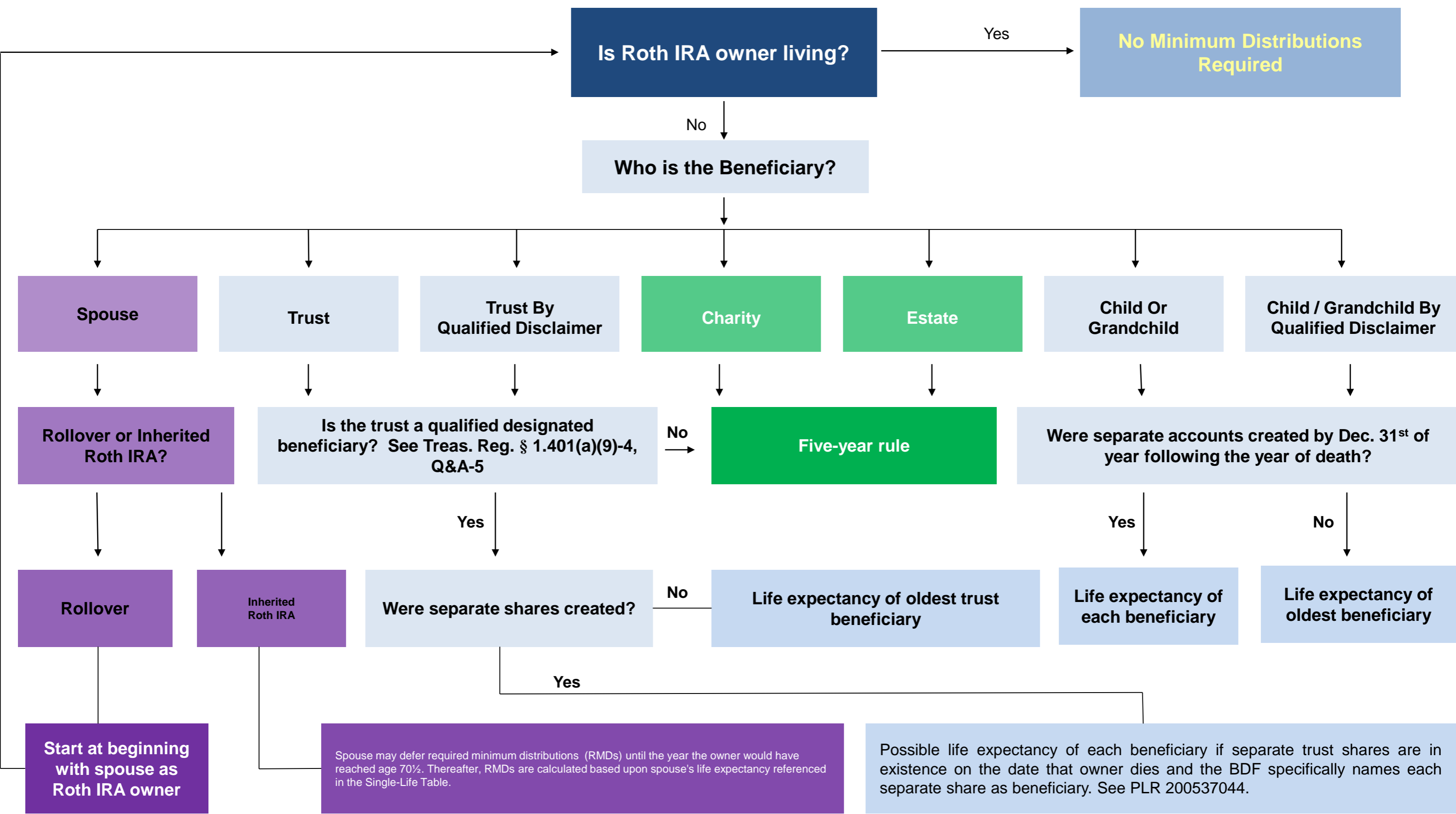
CMRS

CORNETET, MEYER,
RUSH & STAPLETON
ATTORNEYS AT LAW

Elliott Stapleton, Esq.
123 Boggs Lane
Cincinnati, Ohio 45246
(513) 334-0099

For more information or to contact Elliott,
visit: <https://cmrs-law.com/attorney-profiles/elliott-stapleton/>

ROTH IRA DISTRIBUTION PLANNING DECISION-TREE



ROTH IRA SUMMARY

Inherited Spousal Beneficiary

Spouse may defer required minimum distributions (RMDs) until the year the owner would have reached age 70½. Thereafter, RMDs are calculated based upon spouse's life expectancy by referencing her attained age for the year of distribution on the Single Life Table in A-1 of Treas. Reg. § 1.401(a)(9)-9. For each succeeding year, this process is repeated. (Recalculated)

Non-Designated Beneficiary

Entire balance must be distributed no later than December 31st of the fifth anniversary year of the decedent's death. However, consider (if possible) the potential to cash out non-individual beneficiaries, or segregate interests. PLR required.

Elliott Stapleton, Esq.
123 Boggs Lane Cincinnati, Ohio 45246
(513) 334-0099

For more information or to contact Elliott,
visit: <https://cmrs-law.com/attorney-profiles/elliott-stapleton/>

These statements should not serve as a guarantee of the outcome for your specific matter. Prior results do not guarantee a similar outcome in your case. None of the statements above are to be construed as legal, financial, or tax advice. This is an Attorney Advertisement.

A-1 Treas. Reg. § 1.401(a)(9)-9 Single Life Table

Age	Multiple	Age	Multiple	Age	Multiple
0	82.4	37	46.5	74	14.1
1	81.6	38	45.6	75	13.4
2	80.6	39	44.6	76	12.7
3	79.7	40	43.6	77	12.1
4	78.7	41	42.7	78	11.4
5	77.7	42	41.7	79	10.8
6	76.7	43	40.7	80	10.2
7	75.8	44	39.8	81	9.7
8	74.8	45	38.8	82	9.1
9	73.8	46	37.9	83	8.6
10	72.8	47	37.0	84	8.1
11	71.8	48	36.0	85	7.6
12	70.8	49	35.1	86	7.1
13	69.9	50	34.2	87	6.7
14	68.9	51	33.3	88	6.3
15	67.9	52	32.3	89	5.9
16	66.9	53	31.4	90	5.5
17	66.0	54	30.5	91	5.2
18	65.0	55	29.6	92	4.9
19	64.0	56	28.7	93	4.6
20	63.4	57	27.9	94	4.3
21	62.1	58	27.0	95	4.1
22	61.1	59	26.1	96	3.8
23	60.1	60	25.2	97	3.6
24	59.1	61	24.4	98	3.4
25	58.2	62	23.5	99	3.1
26	57.2	63	22.7	100	2.9
27	56.2	64	21.8	101	2.7
28	55.3	65	21.0	102	2.5
29	54.3	66	20.2	103	2.3
30	53.3	67	19.4	104	2.1
31	52.4	68	18.6	105	1.9
32	51.4	69	17.8	106	1.7
33	50.4	70	17.0	107	1.5
34	49.4	71	16.3	108	1.4
35	48.5	72	15.5	109	1.2
36	47.5	73	14.8	110	1.1
				111	1.0